

Axijet®-F High Plume Dilution Blower Direct Drive 'EZ' Motor Arrangement #4



Bulletin # 77-06-0205

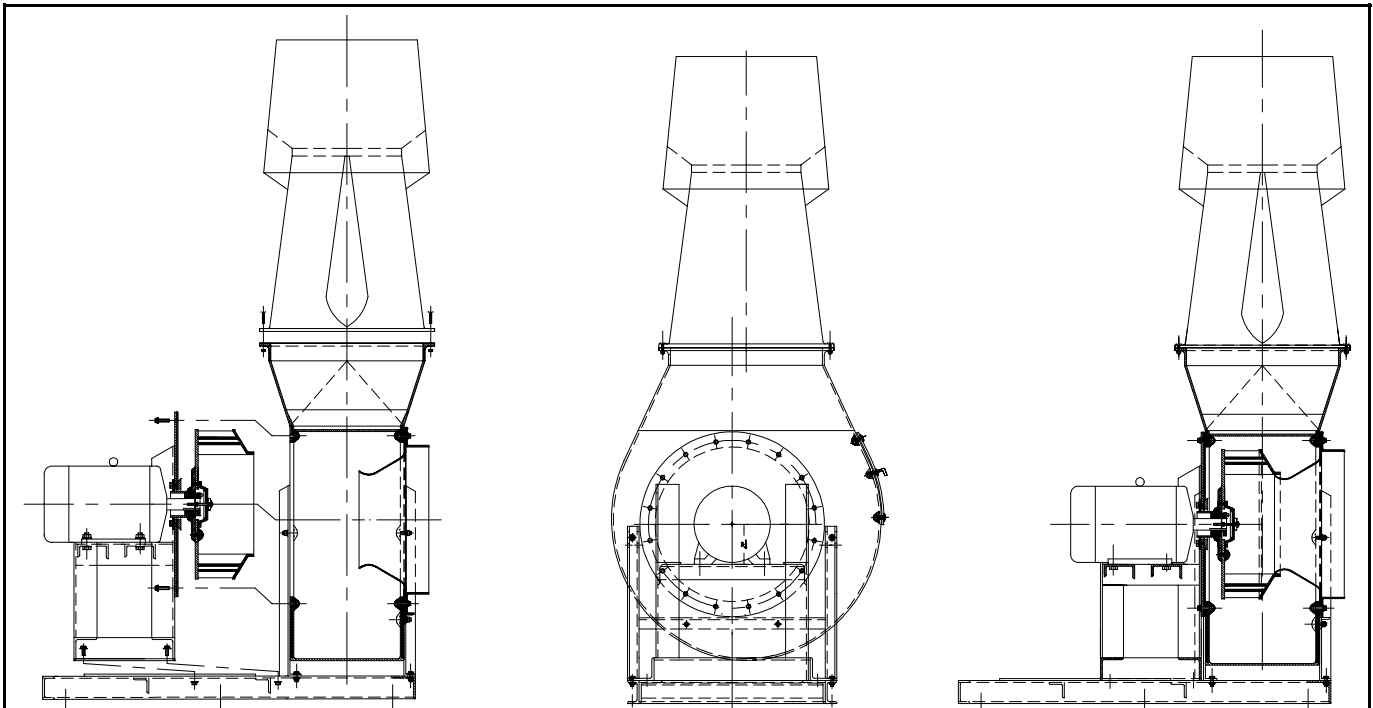
Purpose...

Motors on direct drive laboratory exhaust fans require maintenance or replacement, after many hours of operation. Regular direct drive blowers require that the entire blower be removed from the exhaust system, permitting access to the blower wheel from the fan inlet. In addition to the removal of the fan from the system, the inlet venturi also must be removed so that the blower wheel can be removed from the motor shaft prior to removing the motor. This maintenance is further complicated by additional exposure to hazardous chemical or biological contamination in the exhaust system.

The **Axijet-F** (fiberglass blower assembly) **Direct Drive 'EZ' Motor Arrangement #4** is a blower assembly designed for easy maintenance or replacement of the motor or fan wheel, without removal of the entire fan from the exhaust system. It also minimizes exposure to the contaminated exhaust system.

How it works...

Removal of the motor or fan wheel is accomplished by unbolting the blower backing plate and unbolting the motor base subassembly from the blower base. The motor base subassembly (consisting of the motor and blower wheel assembly) is then slid on the blower base, back from the blower housing.



The motor base subassembly (consisting of the motor and blower wheel assembly) removed from the blower housing.

Axijet High Plume Dilution Blower Axijet-F Direct Drive 'EZ' Motor Arrangement #4 Assembled

Axijet-F High Plume Dilution Blower Direct Drive 'EZ' Motor Arrangement #4

Patent Pending