

Axijet® High Plume Dilution Blower HRU - Heat Recovery Unit



Bulletin # 77-07-0205

Purpose...

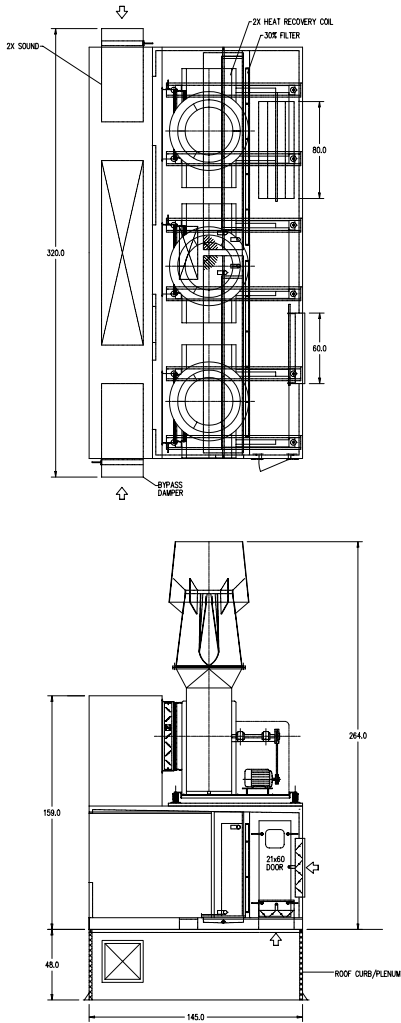
Laboratory exhaust which is removed from the laboratory space must be replaced with fresh, clean and conditioned outdoor air, which is called "make-up" air. Since laboratory ventilation systems are typically are 100% make-up air, considerable energy (and cost) is expended to condition the make-up air.

The **Axijet HRU** is custom heat recovery unit including Axijet High Plume Dilution Blowers, the heat recovery device, filters, dampers and controls.

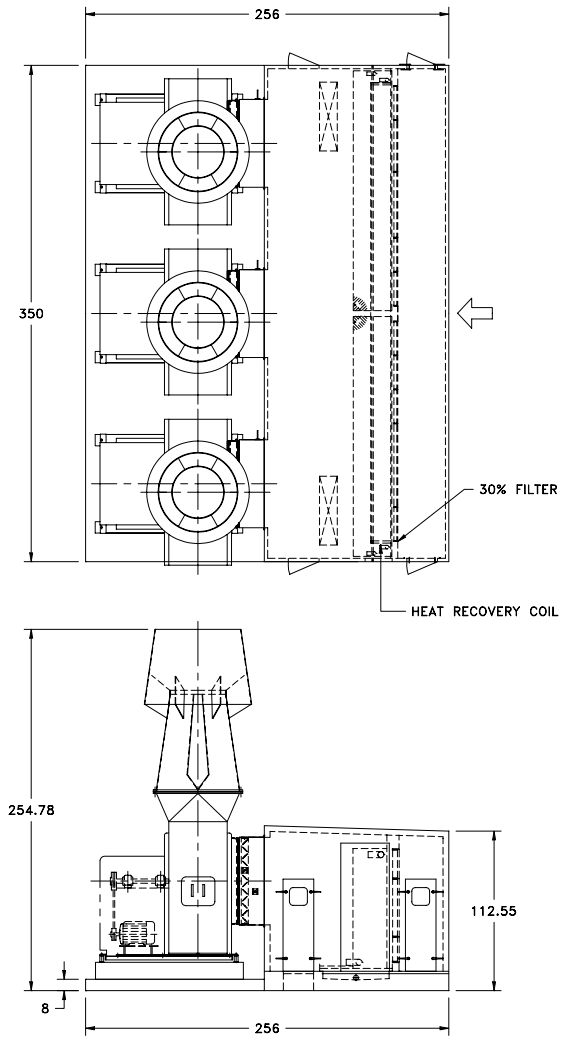
How it works...

The laboratory air being exhausted by the Axijet High Plume Dilution Blowers is drawn through the heat recovery device. The heat recovery device extracts (or transfers) the heat to the make-up air unit where it pre-conditions (heats in winter or cools in summer) the supply air. This pre-conditioning reduces the amount of energy required to heat or cool the supply air, thereby reducing the operating energy cost of the laboratory ventilation system.





Custom Axijet HRU for variable volume exhaust with stacked blowers



Standard Axijet HRU for constant volume exhaust

Benefits of Using the AXIJET HRU Heat Recovery Unit...

- ◆ Fan engineering is identical to SWSI blower application
- ◆ Run around heat recovery coil standard; Other heat recovery devices available
- ◆ Axijet is AMCA Certified for Air and Acoustic Performance
- ◆ Easily Accessible Service Components From Roof Level
- ◆ Standard, Readily Available Replacement Parts
- ◆ Cost Effective design... Standard arrangement does not require reinforcing to support fan weight.

M.K. Plastics Corporation, Montreal Quebec
Tel: 888-278-9988; 514-871-9999; Fax: 514-871-1753; www.mkplastics.com
©M.K. Plastics Corporation, 2002